

PIQUA I-75 INDUSTRIAL PARK

12,000 SF INDUSTRIAL WAREHOUSE BUILDING

EXPECTED DELIVERY DATE *SEPTEMBER 2025*



CROMES DRIVE, PIQUA, OHIO 45356

Property Highlights:

Square Feet: 12,000 SF

Ceiling Height: 24' - 28'

Docks: Build-to-Suit

Drive-In Doors: Seven Total

Five - 16' x 16'

Two - 16' x 14'

- ✓ Sale Price: \$1,950,000
- ✓ Lease Rate: \$6.75 NNN SF/Year
- ✓ Great I-75 Visibility
- ✓ 1 Mile to I-75, Exit 82
- ✓ Expandable Land - 6 different lots
- ✓ 15 Year 100% Tax Abatement
- ✓ 3 Drive-Through Bays



Tim Echemann

Principal Broker

C: 937.658.4403

P: 937.492.4423

techemann@ipbindustrial.com

www.ipbindustrial.com



Conrad Echemann

Sales Associate

C: 937.658.4282

P: 937.492.4423

conrad@ipbindustrial.com

www.ipbindustrial.com

ALL INFORMATION FURNISHED IS FROM SOURCES BELIEVED TO BE RELIABLE, AND IS SUBJECT TO ERROR, OMISSIONS, CHANGE OF TERMS AND CONDITIONS PRIOR TO SALE, LEASE, OR FINANCING, OR WITHDRAWAL

INDUSTRIAL/WAREHOUSE FACILITY



CROMES DRIVE
PIQUA, OHIO 45356

Land: 2.54 Acres

Drive Through-Bays: Three

Construction Type: Metal

Roof: Metal

Power: III Phase

Lighting: LED

Column Spacing: Clear Span

Zoning: Industrial

HVAC Plant: Infrared

Utilities: City Water, Sewer,
& Natural Gas



Scan for more info



Tim Echemann

Principal Broker

C: 937.658.4403

P: 937.492.4423

techemann@ipbindustrial.com

www.ipbindustrial.com



Conrad Echemann

Sales Associate

C: 937.658.4282

P: 937.492.4423

conrad@ipbindustrial.com

www.ipbindustrial.com

INDUSTRIAL/WAREHOUSE FACILITY



CROMES DRIVE
PIQUA, OHIO 45356



Tim Echemann

Principal Broker

C: 937.658.4403

P: 937.492.4423

techemann@ipbindustrial.com

www.ipbindustrial.com



Conrad Echemann

Sales Associate

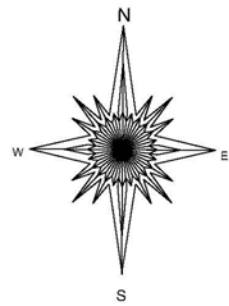
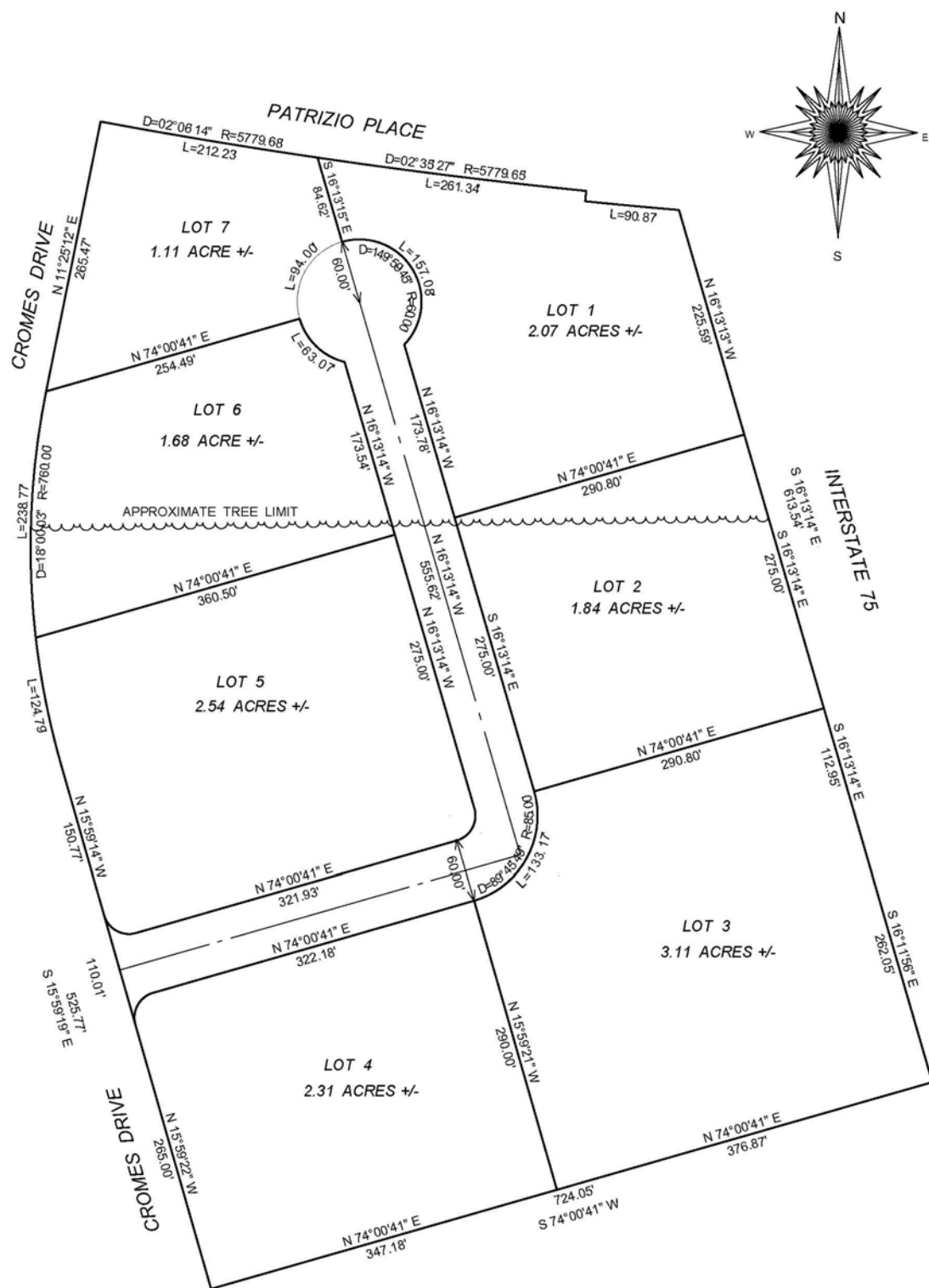
C: 937.658.4282

P: 937.492.4423

conrad@ipbindustrial.com

www.ipbindustrial.com

ALL INFORMATION FURNISHED IS FROM SOURCES BELIEVED TO BE RELIABLE, AND IS SUBJECT TO ERROR, OMISSIONS, CHANGE OF TERMS AND CONDITIONS PRIOR TO SALE, LEASE, OR FINANCING, OR WITHDRAWAL



PRELIMINARY CONCEPT
PROPOSED LOT LAYOUT
CROMES ROAD PROJECT

Piqua, Ohio
Miami County

Reference Record Plat 29-20

PREPARED BY:
NEIL E. TEAFORD, PS #7724
5260 TROY URBANA ROAD
CASSTOWN, OHIO 45312
937-339-4732

JANUARY 15, 2025

@Copyright 2025