

INDUSTRIAL/MANUFACTURING CENTER



14483 S.R. 31
KENTON, OHIO 43326



CSX Transportation

Property Highlights:

Sale Price: \$3,650,000

Square Feet: 93,948 SF

Clear Height: 12' - 20' Clear

Docks: Three

Drive-In Doors: 26 total

- ✓ 15 Year Tax Abatement
- ✓ 390' Rail Spur - **CSX Transportation**
- ✓ Huge Fenced Gravel Lot
- ✓ 27.63 Acres
- ✓ Heavy Power Available
- ✓ Concrete Building Pathways



Tim Echemann

Principal Broker

C: 937.658.4403

P: 937.492.4423

techemann@ipbindustrial.com

www.ipbindustrial.com



Conrad Echemann

Sales Associate

C: 937.658.4282

P: 937.492.4423

conrad@ipbindustrial.com

www.ipbindustrial.com

INDUSTRIAL/MANUFACTURING CENTER



14483 S.R. 31
KENTON, OHIO 43326

Land: 27.63 Acres

Construction Type: All Metal

Power: Heavy Power

Year Built: 1970 - 2016

Lighting: Mixture of LED & T-8

All Heating: Propane

Water: Well Water

Zoning: I - Light Manufacturing & Assembly

I - Industrial, Vacant Land

Parcel Number: 04-130022.0000

04-130024.0000

05-130032.0000

Annual Taxes: \$40,430.75



Scan for more info



Tim Echemann

Principal Broker

C: 937.658.4403

P: 937.492.4423

techemann@ipbindustrial.com

www.ipbindustrial.com



Conrad Echemann

Sales Associate

C: 937.658.4282

P: 937.492.4423

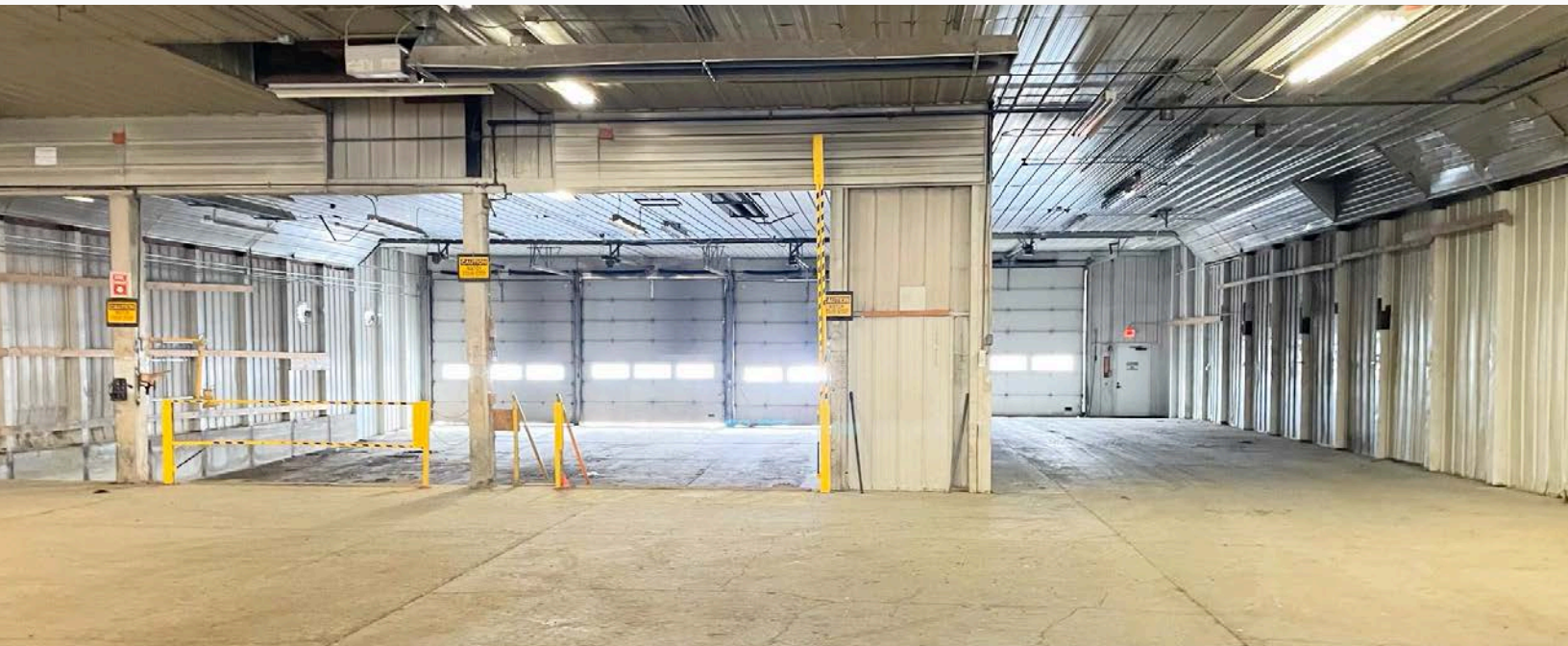
conrad@ipbindustrial.com

www.ipbindustrial.com

INDUSTRIAL/MANUFACTURING CENTER



14483 S.R. 31
KENTON, OHIO 43326



Tim Echemann

Principal Broker
C: 937.658.4403
P: 937.492.4423

techemann@ipbindustrial.com
www.ipbindustrial.com



Conrad Echemann

Sales Associate
C: 937.658.4282
P: 937.492.4423

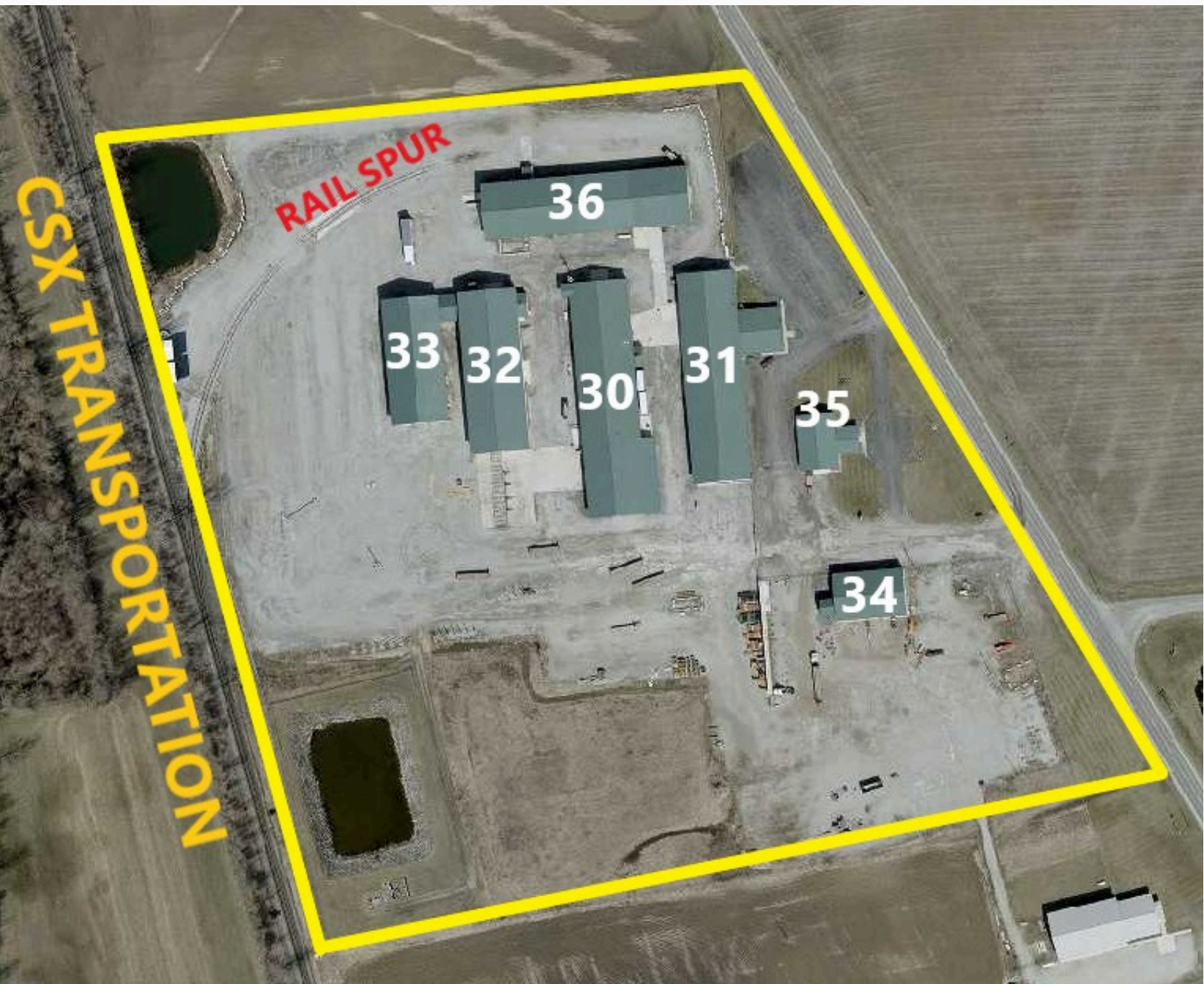
conrad@ipbindustrial.com
www.ipbindustrial.com

ALL INFORMATION FURNISHED IS FROM SOURCES BELIEVED TO BE RELIABLE, AND IS SUBJECT TO ERROR, OMISSIONS, CHANGE OF TERMS AND CONDITIONS PRIOR TO SALE, LEASE, OR FINANCING, OR WITHDRAWAL

INDUSTRIAL/MANUFACTURING CENTER



14483 S.R. 31
KENTON, OHIO 43326



Tim Echemann

Principal Broker

C: 937.658.4403

P: 937.492.4423

techemann@ipbindustrial.com

www.ipbindustrial.com



Conrad Echemann

Sales Associate

C: 937.658.4282

P: 937.492.4423

conrad@ipbindustrial.com

www.ipbindustrial.com

ALL INFORMATION FURNISHED IS FROM SOURCES BELIEVED TO BE RELIABLE, AND IS SUBJECT TO ERROR, OMISSIONS, CHANGE OF TERMS AND CONDITIONS PRIOR TO SALE, LEASE, OR FINANCING, OR WITHDRAWAL