

BUILDING 1B



324 ADAMS STREET
SIDNEY, OHIO 45365



Property Highlights:
Square Footage: 14,000 SF
Docks: Two - (1 w/ Leveler)

- ✓ **Lease Rate:** \$3.00 NNN SF/Year
- ✓ 5 Ton Crane
- ✓ Competitive Rate
- ✓ Newly Renovated



Tim Echemann

Principal Broker

C: 937.658.4403

P: 937.492.4423

techemann@ipbindustrial.com

www.ipbindustrial.com



Conrad Echemann

Sales Associate

C: 937.658.4282

P: 937.492.4423

conrad@ipbindustrial.com

www.ipbindustrial.com

BUILDING 1B



324 ADAMS STREET
SIDNEY, OHIO 45365

Clear Height: 13'

Power: 400 Amps
230 Volts
III Phase

Construction Type: Brick

Lighting: T-8

Zoning: Industrial

Sprinkler System: Wet

Column Spacing: 20' x 20'

Utilities: City Water, Sewer, & Natural Gas

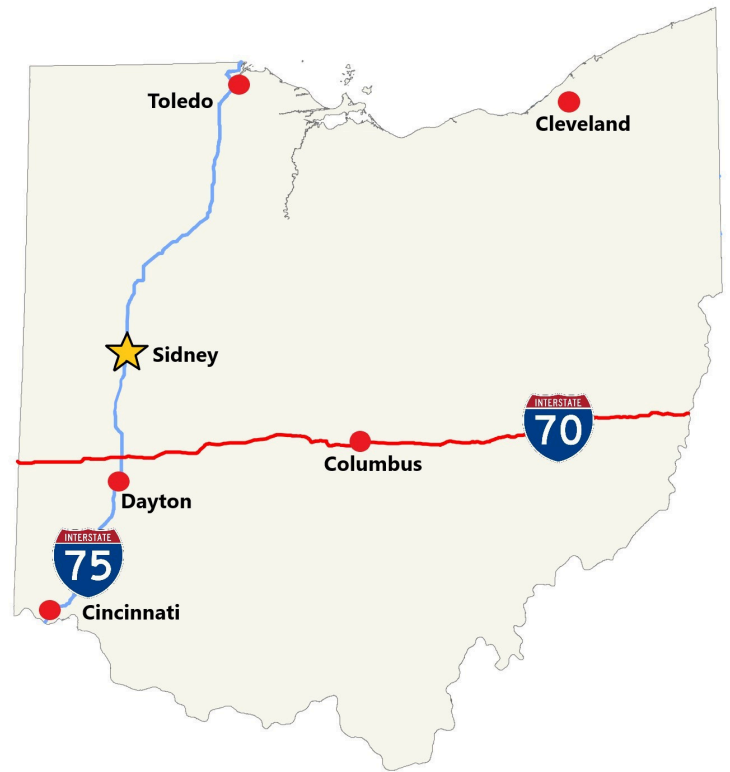
HVAC Plant: Forced Air Gas

Restrooms: One

Floor Thickness: 6"

Location:

Sidney is strategically located along Interstate 75 and is 40 miles north of Dayton, 100 miles north of Cincinnati, 85 miles west of Columbus, 100 miles south of Toledo, and 120 miles east of Indianapolis.



Scan for more info



Tim Echemann

Principal Broker
C: 937.658.4403
P: 937.492.4423

techemann@ipbindustrial.com
www.ipbindustrial.com



Conrad Echemann

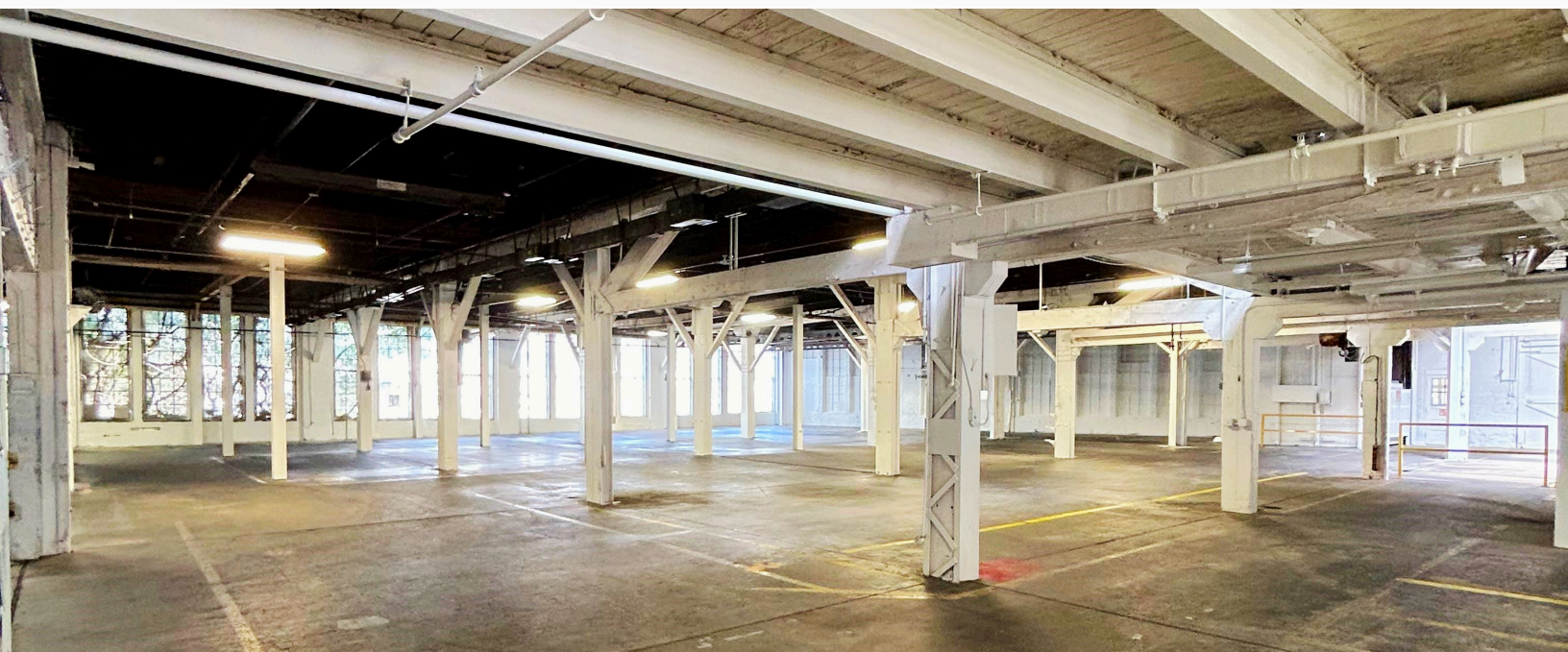
Sales Associate
C: 937.658.4282
P: 937.492.4423

conrad@ipbindustrial.com
www.ipbindustrial.com

BUILDING 1B



324 ADAMS STREET
SIDNEY, OHIO 45365



Tim Echemann

Principal Broker

C: 937.658.4403

P: 937.492.4423

techemann@ipbindustrial.com

www.ipbindustrial.com



Conrad Echemann

Sales Associate

C: 937.658.4282

P: 937.492.4423

conrad@ipbindustrial.com

www.ipbindustrial.com

ALL INFORMATION FURNISHED IS FROM SOURCES BELIEVED TO BE RELIABLE, AND IS SUBJECT TO ERROR, OMISSIONS, CHANGE OF TERMS AND CONDITIONS PRIOR TO SALE, LEASE, OR FINANCING, OR WITHDRAWAL